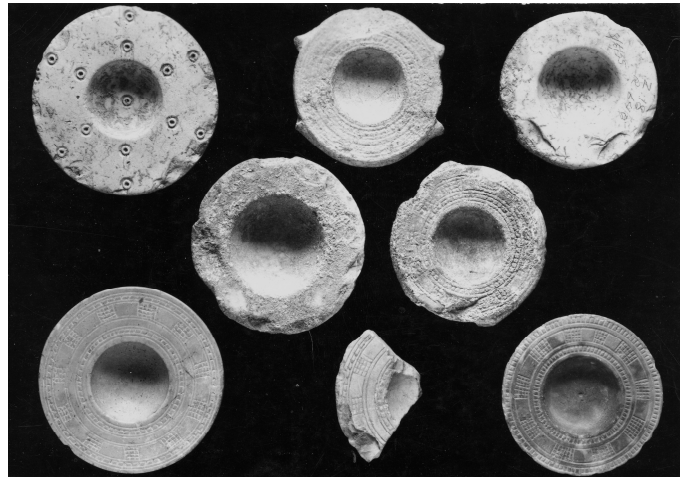


JEWELRY AND COSMETICS

The inhabitants of Tell en-Nasbeh probably spent most of their waking hours providing themselves with the necessities of life; there was little time or wealth for most people to spend on luxuries. The remains of simple **jewelry** and cosmetics, however, indicate the ageless desire to be attractive. Some of the beads and charms were worn for another purpose: they held power believed to ward off evil.

Place jewelry box here

Minerals such as malachite and antimony or stibnite (Kohl) were ground in these limestone cosmetic mortars (pictured right), which are about four inches in diameter and have decorated rims. The powdered minerals were used for eye make-up, the most popular cosmetic of ancient times.



Place black juglet here

Tiny **juglets** of this kind may have been containers for perfumed ointments that kept skin soft in the hot, dry Middle Eastern climate.